

Open Salts

Mosser Glass Company Cambridge, Ohio

Tom Mosser started the Mosser Glass Company in 1971 and is the largest maker of glassware in Cambridge, Ohio. The following are the items that we as Open Salt Collectors are interested in as it helps to let us know what is new and some things that were not made as open salts, but find their way into our collections. It also shows an area where the newer collector can add some color to their collection at a reasonable price. Some of the Mosser glass is marked with one of the following marks.



(This information updated as of October 1, 2009 with information available at that time)

Mosser Glass Item 106 Hexagon Star Salt Dip (Cambridge Mold) (Many colors in current production)

Reference: H&J 888 **Size:** 1 3/4" Dia, 1" High

Remarks: This is an old Cambridge mold. Have made since 1973. Some production marked with M in outline of Ohio.
Colors: See attached pages



Mosser Glass Item 115 Oval Salt Dip (Cambridge Mold) (Many colors in current production)

Reference: H&J 526 **Size:** 1 3/4" Long, 1 1/2" Wide, 5/8" High

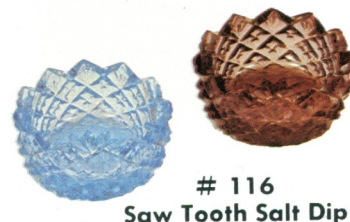
Remarks: This is an old Cambridge mold. Have made since 1973. Have not seen this marked.
Colors: See attached pages



Mosser Glass Item 116 Saw Tooth Salt Dip (Copy of old item) (Many colors in current production)

Reference: H&J 515 **Size:** 1 3/4" Dia, 7/8" High

Remarks: English Hobnail pattern, Same as many other makers. Have made since 1973. Some marked with M in outline of Ohio.
Colors: See attached pages



Mosser Glass Item 118 Swan Salt Dip (Cambridge Mold) (Discontinue in 2004)

Reference: H&J 937 **Size:** 3 5/8" Long, 2 3/8" Wide, 2 1/8" High

Remarks: This is an old Cambridge mold. Have made since 1973. Some production marked with M in outline of Ohio.
Colors: See attached pages.



Mosser Glass Item 112 Open Back Hen Salt Dip (Original Mold in 1973) (Discontinued in 1995)

Reference: H&J 944 **Size:** 3 1/2" Long, 1 3/4" Wide, 1 7/7" High

Remarks: An original Mosser mold. Some marked with M in bowl.
Colors: See attached pages.



For more information on Open Salts, go to my Web Site: www.opensalts.net

Mosser Glass Item 230 Hen on Nest Salt (Original Mold in 1987)

(Many colors in current production)

Reference: None **Size:** 2 7/8" Long, 2 3/8" Wide, 2 1/8" High

Remarks: This is an original Mosser mold. Marked with underlined M in bowl

Colors: See attached pages



Mosser Glass Item 235 Cat on Basket Salt (Original Mold in 1994)

(Many colors in current production)

Reference: None **Size:** 2 7/8" Long, 2 3/8" Wide, 2 3/8" High

Remarks: This is an original Mosser mold. Marked with underlined M in bowl

Colors: See attached pages



Mosser Glass Item 131 Bird on Branch Salt Dip (Original Mold in 1973)

(Discontinued in 1996)

Reference: H&J 940 **Size:** 3 1/2" Long, 1 7/8" Wide, 1 3/8" High

Remarks: An original Mosser mold made by Island Mold. Most marked with M in Circle in bowl.

Colors: Crystal, Blue, Green, Cobalt, Amethyst, Red, Vaseline, (Some colors can be found with Satin or Iridized Finish)



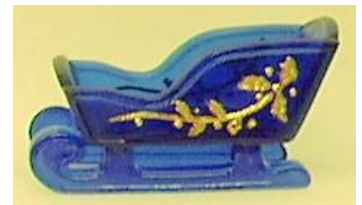
Mosser Glass Item 138 Mini Sleigh (Original Mold in 1986)

(Discontinued in 1999)

Reference: None **Size:** 3 1/4" Long, 1 3/4" Wide, 2" High

Remarks: May be found with plain or stippled inside ends and bottom. Current items are stippled.

Colors: Crystal, Cobalt, Green & Milk (Some Satin) (Some Decorated) (Some Iridized)



Mosser Glass Item 102 Candle Holder (Unknown Mold)

(Discontinued in 1999)

Reference: None **Size:** 3 1/4" Dia, 1 1/4" High

Remarks: This is a heavy glass candle holder, however it is a copy of a heavy master salt or sponge cup. In production at Mosser since 1994.

Colors: Crystal, Cobalt & Red



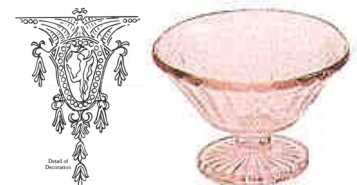
Mosser Glass Item 140-10 Childs Set (Original Mosser Mold)

(All colors in current production)

Reference: None **Size:** 2 3/4" Dia Top, 1 3/4" High

Remarks: This is Mayonnaise Dish from child's set which includes cream, sugar and vegetable dish. However it makes a nice salt and have seen it sold as such. (From Mosser's "Ballerina" Jennifer miniatures. the sides have very nice detail that does not show up in my photo.)
Unmarked

Colors: Apple Green, Pink and Gold Krystal



Mosser Glass Item 140-13 Childs Set (Original Mosser Mold)

(All colors in current production)

Reference: None

Size: 1 3/4" Dia Top, 1 5/8" High

Remarks: This is the Sherbert from a childs set which includes 4 Sherberts and a covered jam dish. However it makes a nice salt and I have seen it sold as such. (From Mosser's "Ballerina" Jennifer miniatures. the sides have very nice detail that does not show up in my photo.) Unmarked

Colors: Apple Green, Pink and Gold Krystal



Mosser Glass Item 140-17 Childs Set (Original Mosser Mold)

(All colors in current production)

Reference: None

Size: 2 3/8" Dia Top of Bowl, 1 1/8" High

Remarks: This is a 2 handle bowl from childs set which includes 4 Bowls and a Small round flat tray. May see this as individual item sold as a salt. This is a new item to the series. (From Mosser's "Ballerina" Jennifer miniatures. the sides have very nice detail that does not show up in my photo.) Unmarked

Colors: Apple Green, Pink and Gold Krystal



Mosser Glass Item Set 7 Lindsey Miniature Relish Set (Original Mosser Mold)

(Discontinue in 2003)

Reference: None

Size: Salt 1" Dia, 1/2" High

Remarks: This is a childs Relish set with 4 Salt Dips. They are a Caprice like Pattern and are very small. About 1" in diameter. Have seen these sold as individual dips.

Colors: Cobalt, Crystal, Moonlight Blue



Set No. 7

Lindsey Miniature Relish Set
(Relish Dish and 4 Salt Dips)

Mosser Glass Item 206-4 Mini Berry Bowl & 4 Sauces (Original Mosser Mold)

(In current production)

Reference: None

Size: 2 3/8" Dia, 7/8" High

Remarks: This is a Sauce from a Childs Mini Berry Bowl and 4 Sauces in Miniature Cherry Thumbprint. I have seen these sauces sold as Salt Dips. Unmarked

Colors: Crystal, Crystal Decorated, Chocolate & Purple Carnival



Mosser Glass Item 107 Diamond Tea Light (Copy of Viking Mold)

(Discontinued in 2004)

Reference: Smith 261-4-2

Size: 2 1/2" Dia, 1 1/4" High

Remarks: This is a larger heavy glass tea light. Sold as Master Salt. Unmarked

Colors: Crystal, Green, Cobalt, Pink, Red, Ice Blue & Cranberry Ice (Some Satin)



Mosser Glass Item LG Wright Wildflower Salt

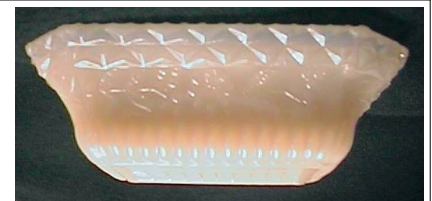
(Mold returned to LG Wright and sold at auction)

Reference: H&J 898

Size: 3 1/4" Long, 2 1/2" Wide & 7/8" High

Remarks: Made by Mosser using the on loan LG Wright Mold. Unmarked

Colors: Crown Tuscan, Blue Milk?



Mosser Glass Item 140 Bird Bath (Acquired in 1974 Mold maker unknown)
(Discontinued in 1982)

Reference: Smith 467-2-2 **Size:** 3" Dia Top, 1 5/8" Dia Base, 2 1/8" High

Remarks: Smith attributes this to L.G. Wright, but in contact with Mosser they confirmed that they had made it several years ago (probably 1970's) in limited colors and quantity. It is marked with the M in Circle Mark.

Colors: Dark Amber, Blue, Clear, Amethyst, Green, Ultramarine, Cobalt, Aqua (Some Satin) ??? Other Colors



Mosser Glass Item 180 Anvil Toothpick (Mold maker unknown)
(Discontinued 1982)

Reference: H&J 898 **Size:** 4" Long, 2 1/8" Wide at feet, 1 7/8" High

Remarks: Anvils are found in a lot of collections and are listed as Salts in some old listings. This Anvil looks to be almost an exact match of the Anvil Salt shown in the Co-Operative Flint Glass reprint on page 9 of H&J. Unmarked

Colors: Blue, Cobalt, Milk , Amber, Amethyst ??? Other Colors



Mosser Glass Item Stipple and Star Salt
(Original L.G. Wright Mold [Made by Botson] Obtained at Auction May 1999)
(Discontinued in 2007)

Reference: H&J 881 **Size:** 3" Dia, 1 7/8" High

Remarks: Initial production marked with M in outline of Ohio inside bottom.

Colors: Crystal, Crystal Iridized, Cobalt.



Mosser Glass Item Jersey Swirl Small Salt
(Original L.G. Wright Mold [Made by Botson] Obtained at Auction May 1999)
(Discontinued in 2007)

Reference: H&J 869 **Size:** 2 1/4" Dia. 1 3/8" High

Remarks: Initial production marked with M in outline of Ohio inside bottom..

Colors: Crystal, Crystal Iridized, Cobalt, Marigold, Marigold Carnival.



Mosser Glass Item Eye-winker Salt
(Original L.G. Wright Mold [Made by Botson] Obtained at Auction May 1999)

Reference: H&J 893 **Size:** 2 1/8" Dia. 1 3/4" High

Remarks: Initial production marked with M in outline of Ohio inside bottom..

Colors: Green Opal, Vaseline Opal, Crystal Opal, Aqua Opal



Item 106 Hexagon Star Salt**Dip**

Amber
 Apple Green
 Amethyst
 Blue
 Blue Milk
 Bonnie Blue
 Burmese
 Crystal
 Cambridge Blue
 Cranberry Ice
 Crown Tuscan
 Cobalt
 Custard
 Delphite Blue
 Green
 Green Opal
 Green Milk
 Heather Bloom
 Honey Amber
 Hunter Green
 Jadeite (Sea Foam)
 Lite Pink
 Milk
 Moonlight Blue
 Passion Pink
 Pink
 Peachblo
 Pumpkin (Candy Corn)
 Red
 Rose Pink
 Ruby Red
 Sapphire Blue
 Teal
 Vaseline
 Vaseline Opal
 Willow Blue
 Gold Crystal
 (Some colors found with Decal
 Decorations, Satin Finish or irid-
 ized)

Item 115 Oval Salt Dip

Amber
 Apple Green
 Amethyst
 Blue
 Blue Milk
 Bonnie Blue
 Crystal
 Cambridge Blue

Caprice Blue
 Cranberry Ice
 Crown Tuscan
 Cobalt
 Colonial Blue
 Custard
 Delphite Blue
 Gold Crystal
 Green
 Green Opal
 Green Milk
 Heather Bloom
 Honey Amber
 Hunter Green
 Jadeite (Sea Foam)
 Milk
 Moonlight Blue
 Passion Pink
 Periwinkle
 Pink
 Peachblo
 Pumpkin (Candy Corn)
 Red
 Ruby Red
 Sapphire Blue
 Teal
 Vaseline
 Vaseline Opal
 Willow Blue
 (Some colors found with Decal
 Decorations, Satin Finish or irid-
 ized)

Item 116 Saw Tooth Salt**Dip**

Amber
 Amethyst
 Apple Green
 Aqua
 Black Amethyst
 Blue
 Blue Milk
 Bonnie Blue
 Burmese
 Crystal
 Cambridge Blue
 Cranberry Ice
 Crown Tuscan
 Cobalt
 Custard
 Dark Amber
 Delphite Blue

Emerald Green
 Gold Crystal
 Green
 Green Opal
 Green Milk
 Heather Bloom
 Honey Amber
 Hunter Green
 Jadeite (Sea Foam)
 Milk
 Moonlight Blue
 Passion Pink
 Pink
 Peachblo
 Pumpkin (Candy Corn)
 Ritz Blue
 Red
 Ruby Red
 Teal
 Vaseline
 Vaseline Opal
 Willow Blue
 (Some colors found with Decal
 Decorations, Satin Finish or Irid-
 ized)

Item 118 Swan Salt Dip

Amethyst
 Blue
 Cobalt
 Crown Tuscan
 Crystal
 Green
 Peachblo
 Pink
 Red
 Turquoise
 Vaseline
 (Many colors found with Satin finish
 or Iridized)

Item 112 Open Back Hen Salt Dip

Crystal
 Blue
 Green
 Apple Green
 Cobalt
 Red
 Amber
 Green Opal
 Amethyst

(Continued on page 6)

(Continued from page 5)

Blue Milk

(Some colors can be found with
Satin Finish or Iridized)

Item 230 Hen on Nest Salt

Amber
Almond
Amethyst
Apple Green
Aqua
Aqua Opal
Bermuda
Black
Blue
Blue Milk
Blue Slag
Blue Windfrost
Bonnie Blue
Bright Blue
Burnt Orange
Cambridge Blue
Celery
Chocolate
Cobalt
Cobalt Slag
Cranberry Ice
Crystal
Crystal Opal
Dark Green
Eggplant
Emerald Green
Fawn
Gold Krystal
Green & Milk Slag
Green Milk
Green Opal
Hunter Green
Jade
Lavender
Lavender Mist
Lemon Meringue
Marigold
Marine Blue
Midnight
Milk
Mustard
Orange Marmalade
Periwinkle Blue
Persimmon
Pink
Pumpkin (Candy Corn)
Purple Slag
Purple Carnival
Red

Red Slag
Rose
Royal Luster
Royal Plum
Sage
Sea Foam
Tangerine
Teal
Tomato
Tomato Bisque
Vaseline
Vaseline Opal
Willow Blue
(Some colors can be found with Satin
or Iridized Finish)

Item 235 Cat on Basket Salt

Almond
Amber
Amethyst
Apple Green
Aqua Opal
Black Amethyst
Blue
Blue Slag
Bonnie Blue
Bright Blue
Chocolate
Cobalt
Cobalt Slag
Colonial Blue
Cranberry Ice
Crystal
Crystal Opal
Dark Green
Emerald Green
Fawn
Gold Krystal
Green Slag
Green Milk
Green Opal
Hunter Green
Marigold
Marine Blue
Milk
Orange Pineapple #3
Periwinkle Blue
Periwinkle Light
Pink
Purple Carnival
Purple Slag
Purple
Red
Red Slag
Rose
Royal Luster
Ruby Red

Salmon Pink
Sea Foam
Tangerine
Teal
Vaseline
Vaseline Opal
Willow Blue
(Some colors can be found with Satin
or Iridized Finish)