

CAMBRIDGE PEDESTAL 6 PANELLED BOWL ON HEXAGONAL FOOT

Ref Nr 1

ADD INFO

ITEMS: INDIVIDUAL

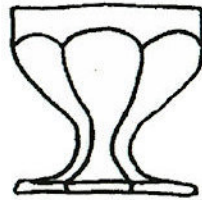
Reference BERG SALTY COMMENTS # 34 HEACOCK & JOHNSON 421 SMITH 57-4-2



PICTURE
1 13/16" DIA, 1 15/16" HIGH

COLORS: CLEAR, PEACH-BLO, EMERALD LITE, BLUE BELL

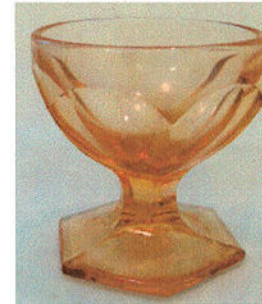
REMARKS



BERG DRAWING
1 13/16" DIA, 1 15/16" HIGH



PICTURE
1 13/16" DIA, 1 15/16" HIGH



PICTURE
1 13/16" DIA, 1 15/16" HIGH



PICTURE
1 13/16" DIA, 1 15/16" HIGH

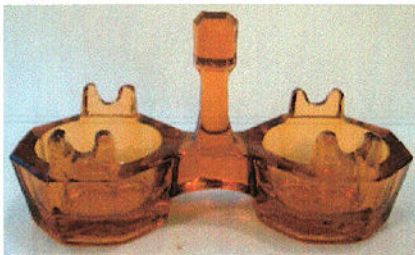
CAMBRIDGE DOUBLE, TWO 6-SIDED TUBS WITH NOTCHED HANDLES

Ref Nr 2

ADD INFO MOLD WENT TO IMPERIAL, WETZEL AND NOW AT BOWMAN

ITEMS: DOUBLE

Reference BERG SALTY COMMENTS # 34 HEACOCK & JOHNSON 797 SMITH 52-3-1 COLOR CAMBRIDGE 2 PAGE 49



PICTURE
3 5/8" X 1 1/2", 2" HIGH

COLORS: CLEAR, PEACH-BLO, EMERALD LITE, AMBER, MULBERRY, BLUE BELL

REMARKS



BERG DRAWING
3 5/8" X 1 1/2", 2" HIGH



PICTURE
3 5/8" X 1 1/2", 2" HIGH



PICTURE
3 5/8" X 1 1/2", 2" HIGH



PICTURE
3 5/8" X 1 1/2", 2" HIGH

CAMBRIDGE NOTCHED-HANDLE 8 SIDED TUB WITH ROUNDED DINNERWARE SET

Ref Nr 3

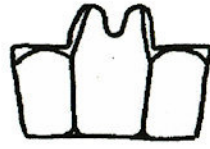
ADD INFO CAMBRIDGE 400. MOLD WENT TO IMPERIAL, AND NOW AT BOYD.

ITEMS: INDIVIDUAL Reference BERG SALTY COMMENTS # 34 HEACOCK & JOHNSON 2847 SMITH 13-2-3 CAMBRIDGE 1930-1934 PAGE 40

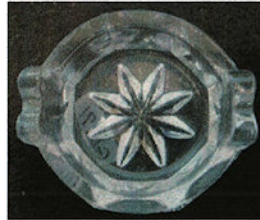


COLORS: CLEAR, PEACH-BLO, EMERALD LITE, AMBER

REMARKS MADE IN MANY COLORS BY BOYD, ALL MARKED



3



PICTURE
1 13/16" DIA, 1 1/8" HIGH

BERG DRAWING
1 13/16" DIA, 1 1/8" HIGH

PICTURE TOP VIEW
1 13/16" DIA, 1 1/8" HIGH

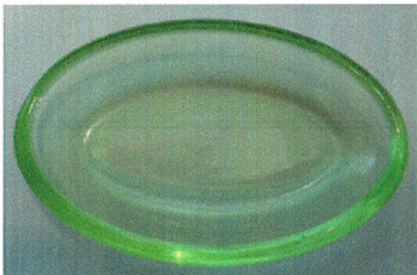
GROUP PICTURE

CAMBRIDGE SMALL OVAL GLASS CELERY TRAY

Ref Nr 4

ADD INFO CAMBRIDGE Nr 606

ITEMS: CELERY Reference BERG SALTY COMMENTS # 34 HEACOCK & JOHNSON 831 SMITH 262-1-2 CAMBRIDGE 1930-1934 PAGE 39



COLORS: AMBER, PEACH-BLO, EMERALD LITE

REMARKS



4



PICTURE TOP
2 1/2" X 1 5/8", 1/2" HIGH

BERG DRAWING
2 1/2" X 1 5/8", 1/2" HIGH

CATALOG PICTURE
2 1/2" X 1 5/8", 1/2" HIGH

PICTURE ETCHED EDGE
2 1/2" X 1 5/8", 1/2" HIGH

GROUP PICTURE

CAMBRIDGE LOW OBLONG SALT, 10 PANELS AROUND OVAL BOWL

Ref Nr 5

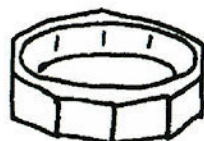
ADD INFO MOLD NOW AT MOSSER.

ITEMS: INDIVIDUAL Reference BERG SALTY COMMENTS # 34 HEACOCK & JOHNSON 434 SMITH 261-2-1



COLORS: CLEAR

REMARKS MADE IN MANY COLORS BY MOSSER



5



PICTURE
1 13/16" X 1 1/2", 11/16" HIGH

BERG DRAWING
1 13/16" X 1 1/2", 11/16" HIGH

PICTURE MOSSER
1 13/16" X 1 1/2", 11/16" HIGH

CAMBRIDGE DECAGON PATTERN, SMALL 10 SIDED PEDESTAL SALT

Ref Nr 6

ADD INFO CAMBRIDGE 613

ITEMS: INDIVIDUAL Reference BERG SALTY COMMENTS # 34 HEACOCK & JOHNSON 777 SMITH 468-5-1 CAMBRIDGE 1930-1934 PAGE 27



COLORS: AMBER, PEACH-BLO, EMERALD LITE

REMARKS



6



PICTURE
1 5/8" DIA, 1 13/16" HIGH

BERG DRAWING
1 5/8" DIA, 1 13/16" HIGH

PICTURE
1 5/8" DIA, 1 13/16" HIGH

PICTURE
1 5/8" DIA, 1 13/16" HIGH

CAMBRIDGE STRATFORD PATTERN, EITHER TOOTHED OR FLAT RIM

Ref Nr 7

ADD INFO CAMBRIDGE 1906 (102). MOUNT VERNON. MOLD WENT TO IMPERIAL THEN SUMMIT.

ITEMS: INDIVIDUAL

Reference BERG SALTY COMMENTS # 34, # 15 SMITH 80-5-1 CAMBRIDGE 1930-1934 PAGE 31-26 CAMBRIDGE 1930-1934 PAGE 42 COLOR CAMBRIDGE 1 PAGE 35 & 105



COLORS: CLEAR, PEACH-BLO, LITE EMERALD, AMBER

REMARKS



7



102-Oval 2 Handled Salt Dip



TOOTHED LITE EMERALD
4 1/4" X 1 5/8, 2 3/8" HIGH

BERG DRAWING
4 1/4" X 1 3/4, 2 3/8" HIGH

CATALOG PICTURE
4 1/4" X 1 5/8, 2 3/8" HIGH

TOOTHED AMBER
4 1/4" X 1 5/8, 2 3/8" HIGH

FLAT RIM PEACH-BLO
4 1/4" X 1 5/8, 2 3/8" HIGH

CAMBRIDGE MOUNT VERNON PATTERN PEDESTAL

Ref Nr 8

ADD INFO CAMBRIDGE Nr 102. MOLD WENT TO IMPERIAL THEN SUMMIT.

ITEMS: INDIVIDUAL

Reference BERG SALTY COMMENTS # 34, # 15 HEACOCK & JOHNSON 3555 SMITH 40-5-3 CAMBRIDGE 1930-1934 PAGE 32-26 CAMBRIDGE 1949-1953 225, 244, 285 CAMBRIDGE BENNET PAGE 27, 63 COLOR CAMBRIDGE 2 PAGE 73



COLORS: CLEAR, MILK, CROWN TUSCAN, CORAL, CARMEN, EMERALD,

REMARKS ALSO FOUND WITH DECORATION. CAMBRIDGE ALSO CALLED Nr W 81. MADE IN MANY COLORS BY SUMMIT



8



102
Ind. Salt



EMERALD
4 1/4" X 1 7/8, 2 3/8" HIGH

BERG DRAWING
4 1/4" X 1 7/8, 2 3/8" HIGH

CATALOG PICTURE
4 1/4" X 1 7/8, 2 3/8" HIGH

CARMEN
4 1/4" X 1 7/8, 2 3/8" HIGH

CROWN TUSCAN GOLD
4 1/4" X 1 7/8, 2 3/8" HIGH

CAMBRIDGE MOUNT VERNON FLAT BOTTOM TYPE

Ref Nr 9

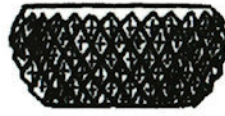
ADD INFO CAMBRIDGE 1187 (24). MOUNT VERNON. MOLD WENT TO IMPERIAL AND NOW AT BOYD.

ITEMS: INDIVIDUAL Reference BERG SALTY COMMENTS # 34 CAMBRIDGE BENNET PAGE 68 SMITH 29-4-1 CAMBRIDGE 1930-1934 PAGE 32-26

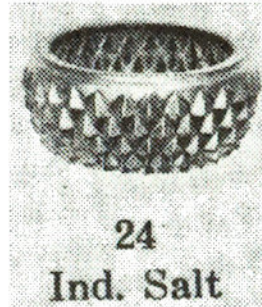


COLORS: CLEAR

REMARKS MADE IN MANY COLORS BY BOYD, ALL MARKED



9



CATALOG PICTURE
2 1/8" DIA, 1" HIGH

PICTURE
2 1/8" DIA, 1" HIGH

BERG DRAWING

CAMBRIDGE PRESSED THEN CUT, BUZZ STARS AND LINES

Ref Nr 10

ADD INFO CAMBRIDGE Nr 1191 MOLD

ITEMS: INDIVIDUAL Reference BERG SALTY COMMENTS # 34 HEACOCK & JOHNSON 3127 SMITH 477-1-1 CAMBRIDGE BENNET PAGE 68



COLORS: CLEAR

REMARKS



10

PICTURE
1 3/4" DIA, 15/16" HIGH

BERG DRAWING

CAMBRIDGE ROUND CUT GLASS, VINES AND FLOWERS, 1-3/4" DIA

Ref Nr 11

ADD INFO CAMBRIDGE Nr 1193 , 1 3/4" DIA AND CAMBRIDGE Nr 1202 , 2" DIA

ITEMS: INDIVIDUAL *Reference* BERG SALTY COMMENTS # 34 HEACOCK & JOHNSON 2814 SMITH 29-1-3



COLORS: CLEAR

REMARKS



11

PICTURE
1 3/4" DIA, 7/8" HIGH

BERG DRAWING

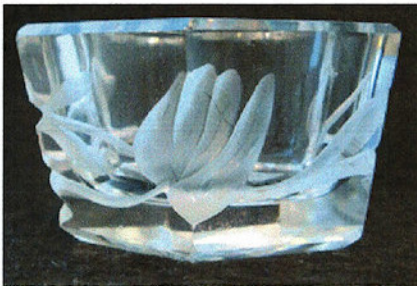
PICTURE
1 3/4" DIA, 7/8" HIGH

CAMBRIDGE CUT GLASS, 6 SLANT SIDES, VINES & FLOWERS

Ref Nr 12

ADD INFO CAMBRIDGE Nr 1201

ITEMS: INDIVIDUAL *Reference* BERG SALTY COMMENTS # 34 HEACOCK & JOHNSON 2813 SMITH 82-1-1



COLORS: CLEAR

REMARKS



12

PICTURE
1 15/16" DIA, 1" HIGH

BERG DRAWING
1 15/16" DIA, 1" HIGH

CAMBRIDGE WIDE FLANGE RIM, SOMETIMES IN PERFORATED PLATED HOLDER

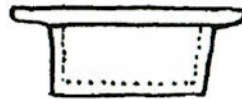
Ref Nr 13

ADD INFO CAMBRIDGE Nr 1239

ITEMS: INDIVIDUAL Reference BERG SALTY COMMENTS # 34 HEACOCK & JOHNSON 2578 SMITH 3-1-2



COLORS: CLEAR
REMARKS



13

PICTURE IN PLATED HOLDER
2 5/16" DIA, 15/16" HIGH

BERG DRAWING
2 5/16" DIA, 13/16" HIGH

PICTURE
2 5/16" DIA, 13/16" HIGH

CAMBRIDGE SQUARE, ZIPPERED SIDES

Ref Nr 14

ADD INFO CAMBRIDGE Nr 1525, MOLD WENT TO IMPERIAL, WETZEL AND NOW AT BOWMAN.

ITEMS: INDIVIDUAL Reference BERG SALTY COMMENTS # 34 HEACOCK & JOHNSON 2743 SMITH 10-1-2 CAMBRIDGE 1949-1953 PAGE 35
CAMBRIDGE BENNET PAGE 68



COLORS: CLEAR
REMARKS BOWMAN COLORS, VASELINE,



14

1525—Open Salt

PICTURE
1 1/2" SQ, 15/16" HIGH

BERG DRAWING
1 1/2" SQ, 15/16" HIGH

CATALOG PICTURE
1 1/2" SQ, 15/16" HIGH

PICTURE TOP VIEW
1 1/2" SQ, 15/16" HIGH

CAMBRIDGE NR 2502 DEEP FILE PATTERN

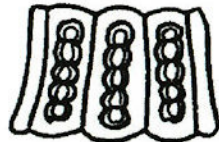
Ref Nr 15

ADD INFO CAMBRIDGE 2502 WARE. CIRCA 1903, ORIGINALLY DALZELL.

ITEMS: INDIVIDUAL Reference BERG SALTY COMMENTS # 34 HEACOCK & JOHNSON 2638 CAMBRIDGE 1903 CAT Page 16



COLORS: CLEAR
REMARKS



15

BERG DRAWING



Individual Salt.
Packed 75 dozen in a barrel.

CATALOG PICTURE
2" DIA, 1 1/4" HIGH

PICTURE
2" DIA, 1 1/4" HIGH

CAMBRIDGE NR 2504 JOSPHINES FAN PATTERN

Ref Nr 16

ADD INFO CAMBRIDGE 2504 WARE, ORIGINALLY ROBINSON GLASS

ITEMS: INDIVIDUAL Reference BERG SALTY COMMENTS # 34 HEACOCK & JOHNSON 2532 SMITH 198-5-1 CAMBRIDGE 1903 CAT PAGE 19



COLORS: CLEAR
REMARKS MADE WITH AND WITHOUT RING TOP



16

BERG DRAWING



Individual Salt.

CATALOG PICTURE
1 3/4" DIA, 1 1/8" HIGH



PICTURE
1 3/4" DIA, 1 1/16" HIGH

PICTURE
1 3/4" DIA, 1 1/8" HIGH

CAMBRIDGE NR 2571 ADA PATTERN

Ref Nr 17

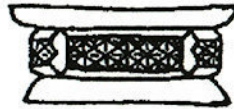
ADD INFO Cambridge Nr 2571, CIRCA 1903

ITEMS: INDIVIDUAL, TABLE Reference BERG SALTY COMMENTS # 34 HEACOCK & JOHNSON 2663 SMITH 18-1-2 CAMBRIDGE 1903 CAT Page 12
CAMBRIDGE BENNET PAGE 68



COLORS: CLEAR

REMARKS



17



PICTURE INDIVIDUAL
2 1/8" DIA, 1" HIGH

BERG DRAWING

CATALOG PICTURE

INDIVIDUAL BOTTOM

INDIVIDUAL TOP

CAMBRIDGE NR 2615 HEAVY OVAL TABLE SALT, DIAMONDS UNDER BROAD RIM

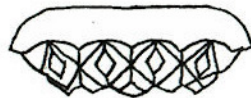
Ref Nr 18

ADD INFO CAMBRIDGE Nr 2615

ITEMS: TABLE Reference BERG SALTY COMMENTS # 34 SMITH 405-5-2 CAMBRIDGE 1903 CAT page

COLORS: CLEAR

REMARKS



18



No. 2615, Oval Table Salt,
Packed 30 doz. in a bbl.

BERG DRAWING

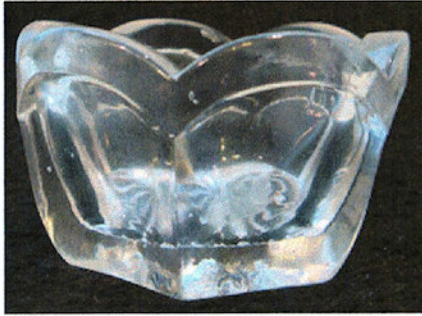
CATALOG PICTURE

CAMBRIDGE NR 2630 COLONIAL SALT MAY NOT BE PART OF PATTERN SET

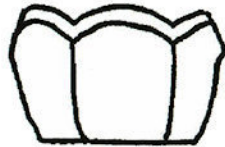
Ref Nr 19

ADD INFO CAMBRIDGE Nr 2630, CIRCA 1905

ITEMS: INDIVIDUAL Reference BERG SALTY COMMENTS # 34 HEACOCK & JOHNSON 2962 SMITH 17-3-3



COLORS: CLEAR
REMARKS



19



PICTURE
2" DIA, 1 1/8" HIGH

BERG DRAWING

PICTURE FROM TOP
2" DIA, 1 1/8" HIGH

PICTURE FROM TOP

CAMBRIDGE NR 2631 MARJORIE PATTERN

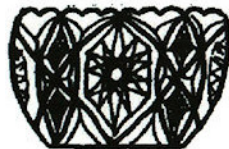
Ref Nr 20

ADD INFO CAMBRIDGE Nr 2631, CIRCA 1906

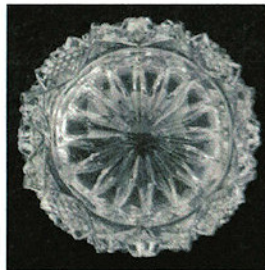
ITEMS: INDIVIDUAL Reference BERG SALTY COMMENTS # 34 HEACOCK & JOHNSON 2676 SMITH 31-2-1



COLORS: CLEAR
REMARKS



20



PICTURE
1 15/16" DIA, 1 1/8" HIGH

BERG DRAWING
1 15/16" DIA, 1 1/8" HIGH

PICTURE BOTTOM
1 15/16" DIA, 1 1/8" HIGH

CAMBRIDGE NR 2660 WHEAT SHEAF PATTERN SOLD AS CHILDS DISH

Ref Nr 21

ADD INFO CAMBRIDGE Nr 2660, CIRCA 1908

ITEMS: CHILDS DISH, INDIVIDUAL Reference BERG SALTY COMMENTS # 34 HEACOCK & JOHNSON 2623 SMITH 26-4-2



COLORS: CLEAR

REMARKS



21



PICTURE
2 3/16" DIA, 7/8" HIGH

BERG DRAWING
2 3/16" DIA, 7/8" HIGH

PICTURE FROM TOP
2 3/16" DIA, 7/8" HIGH

CAMBRIDGE NR 2810 INVERTED STRAWBERRY PATTERN, ALSO SOLD AS CHILDS DISH

Ref Nr 22

ADD INFO CAMBRIDGE Nr 2810, CIRCA 1915

ITEMS: CHILDS DISH, INDIVIDUAL Reference BERG SALTY COMMENTS # 34 HEACOCK & JOHNSON 2647 SMITH 20-4-3



COLORS: CLEAR

REMARKS



22



PICTURE
2 3/16" DIA, 13/16" HIGH

BERG DRAWING
2 3/16" DIA, 13/16" HIGH

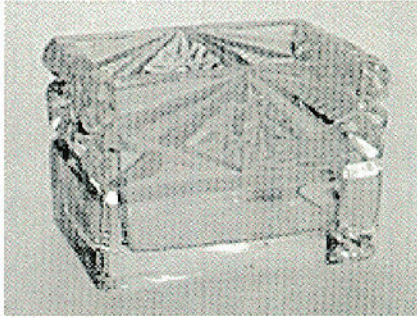
PICTURE FROM TOP
2 3/16" DIA, 13/16" HIGH

CAMBRIDGE NR 2683 RECTANGULAR BOX, STARBURST AT TOP OF EACH SIDE.

Ref Nr 23

ADD INFO CAMBRIDGE Nr 2683. BUTTONS IN DIAMONDS AND RIDGED TRIANGLES AROUND UPPER SIDE. PLAIN

ITEMS: TABLE *Reference* BERG SALTY COMMENTS # 34 SMITH 480-2-2



COLORS: CLEAR

REMARKS



23

BOOK PICTURE

BERG DRAWING

CAMBRIDGE NR 2684 CUT GLASS, ROUND, 2 ROWS OF CRASSHATCHED BUTTONS

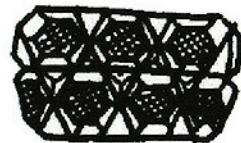
Ref Nr 24

ADD INFO CAMBRIDGE Nr 2684

ITEMS: INDIVIDUAL *Reference* BERG SALTY COMMENTS # 34 SMITH 470-1-1

COLORS: CLEAR

REMARKS



24

BERG DRAWING

CAMBRIDGE NR 2800 TAB HANDLE 12 SIDED TUB

Ref Nr 25

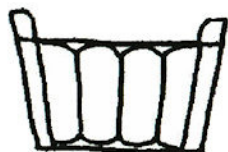
ADD INFO CAMBRIDGE Nr 2800

ITEMS: INDIVIDUAL Reference BERG SALTY COMMENTS # 34 HEACOCK & JOHNSON 2846 SMITH 13-3-1 CAMBRIDGE BENNET PAGE 68



COLORS: CLEAR

REMARKS



25



PICTURE

1 3/4" X 1 5/8", 1 3/16" HIGH

BERG DRAWING

1 3/4" X 1 5/8", 1 3/16" HIGH

PICTURE TOP

1 3/4" X 1 5/8", 1 3/16" HIGH

CAMBRIDGE NR 2908 CAPRICE PATTERN 4 TOES

Ref Nr 26

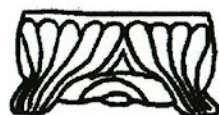
ADD INFO CAMBRIDGE Nr 2908. MOLD WENT TO IMPERIAL, SUMMIT AND NOW AT CAMBRIDGE COLLECTORS (?)

ITEMS: INDIVIDUAL Reference BERG SALTY COMMENTS # 34, # 15 CAMBRIDGE BENNET PAGE 68 COLOR CAMBRIDGE 1 PAGE 81

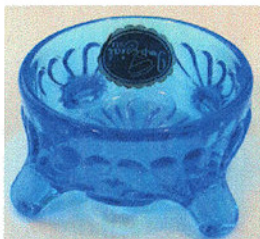


COLORS: CLEAR

REMARKS EARLY IMPERIAL ONLY PAPER LABEL, LATER HAD IG MARK. EARLY SUMMIT STILL HAD IG MARK, THEN REMOVED. SOME SUMMIT HAVE SMALL DOT IN BOTTOM CENTER



26



PICTURE

2 5/8" ACROSS, 1 1/8" HIGH

BERG DRAWING

2 5/8" ACROSS, 1 1/8" HIGH

UNMARKED IMPERIAL W/LA

2 5/8" ACROSS, 1 1/8" HIGH

IMPERIAL W/"IG" & LABEL

2 5/8" ACROSS, 1 1/8" HIGH

CAMBRIDGE NR 2933 HEXAGONAL SALT, STAR IMPRESSED IN EACH PANEL

Ref Nr 27

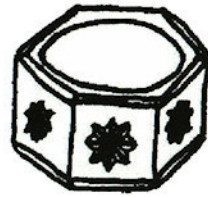
ADD INFO CAMBRIDGE Nr 2933. MOLD WENT TO IMPERIAL, AND NOW AT MOSSER.

ITEMS: INDIVIDUAL *Reference* BERG SALTY COMMENTS # 34 HEACOCK & JOHNSON 439 SMITH 361-1-1



COLORS: CLEAR. TOPAZ

REMARKS THIS SALT WAS ALSO POLISHED ON FLAT SURFACES BY CAMBRIDGE.



27

BERG DRAWING
1 3/4" DIA, 1" HIGH



PICTURE TOP
1 3/4" DIA, 1" HIGH



PICTURE POLISHED SIDED SET OF 6 TOPAZ
1 3/4" DIA, 7/8" HIGH



CAMBRIDGE NR 2613 SQUARE TABLE SALT

Ref Nr 28

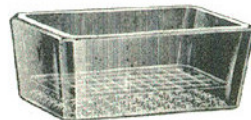
ADD INFO

ITEMS: TABLE

Reference CAMBRIDGE 1903 CAT PAGE 32

COLORS: CLEAR

REMARKS THIS SALT IS RECTANGULAR



No. 2613, Square Table Salt.

CATALOG PICTURE

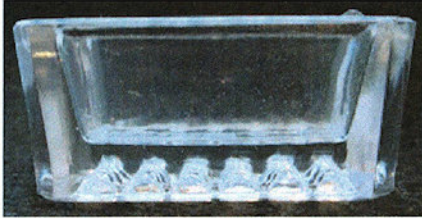
CAMBRIDGE NR 2614 SQUARE INDIVIDUAL SALT

Ref Nr 29

ADD INFO

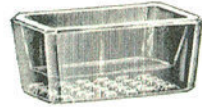
ITEMS: INDIVIDUAL

Reference BERG SALTY COMMENTS # 34 CAMBRIDGE 1903 CAT PAGE 32 HEACOCK & JOHNSON 2796 CAMBRIDGE BENNET PAGE 68



COLORS: CLEAR

REMARKS THIS SALT IS RECTANGULAR



No. 2614, Square Ind. Salt.



PICTURE
2" X 1 3/8", 15/16" HIGH

CATALOG PICTURE
2" X 1 3/8", 15/16" HIGH

PICTURE BOTTOM
2" X 1 3/8", 15/16" HIGH

CAMBRIDGE DOUBLE OPEN SALT

Ref Nr 30

ADD INFO ?? 3900 CORINTH

ITEMS: DOUBLE SALT

Reference



COLORS: CLEAR

REMARKS



DOUBLE SALT SIDE VIEW
4 5/8" X 2 1/8", 1 1/8" HIGH

DOUBLE SALT TOP VIEW
4 5/8" X 2 1/8", 1 1/8" HIGH

CAMBRIDGE ??? PEDESTAL SALT HAS FAINT OVAL PANELS INSIDE AND A FLAT TOP.

Ref Nr 31

ADD INFO SIMILAR TO DECAGON

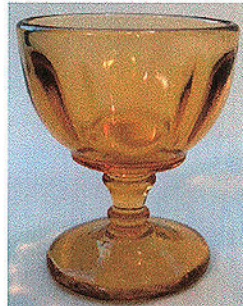
ITEMS: INDIVIDUAL *Reference*



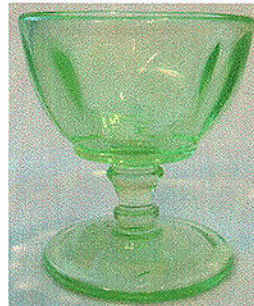
PICTURE
1 1/2" DIA, 1 7/8" HIGH

COLORS: AMBER, PEACH-BLO, EMERALD LITE

REMARKS PATTERN INSIDE, PROBABLY MADE WITH DECAGON MOLD WITH NEW TOP RING AND PLUNGER. (PANELS INSIDE



PICTURE
1 1/2" DIA, 1 7/8" HIGH



PICTURE
1 1/2" DIA, 1 7/8" HIGH

SUMMIT SALT FROM OLD CAMBRIDGE MOLD 3400/71

Ref Nr 32

ADD INFO UNKNOWN IF THIS IS MOLD FOR NUT CUP THAT WAS REFORMED AFTER PRESSING WAS USED AS I

ITEMS: INDIVIDUAL *Reference* BERG SALTY COMMENTS # 15



COLORS:

REMARKS SUMMIT MADE ONLY USED AS CAME FROM MOLD AND NEVER REFORMED. SUMMIT MADE MANY COLORS, UNMARKED

SUMMIT INDIVIDUAL SALT
2 1/8" X 2 5/8", 1 3/4" HIGH

CAMBRIDGE SALTS (PROBABLY LINERS)

Ref Nr 33

ADD INFO

ITEMS: INDIVIDUAL

Reference CAMBRIDGE BENNET PAGE 47



COLORS: ROYAL BLUE

REMARKS

PICTURE CAMBRIDGE GLASS
HAROLD & JUDY BENNETT

CAMBRIDGE 3" SWAN TYPE I INDIVIDUAL NUT OR MINT

Ref Nr 35

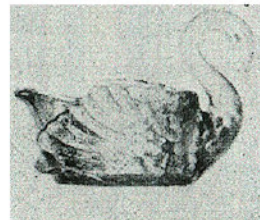
ADD INFO CAMBRIDGE Nr 1040. MOLD WENT TO IMPERIAL, AND NOW AT BOYD.

ITEMS: NUT, MINT, ASH
TRAY SALT

Reference BERG SALTY COMMENTS #27 CAMBRIDGE 1930-1934 PAGE 48 CAMBRIDGE 1949-1953 PAGE 36 & 38 INGERSOLL
CAMB SWAN PAGE 2-4 COLOR CAMBRIDGE 2 PAGE 123 CAMBRIDGE BENNET PAGE 58 COLOR CAMBRIDGE 1
PAGE 99 & 125

COLORS: CLEAR, LT EMERALD, EBONY, PEACH*BLO, HEATHER PINK, APPLE GREEN

REMARKS FLAT TOP TO WINGS. CAMBRIDGE MADE 1928-1933 MARKED WITH C IN TRIANGLE. NOT MADE BY
IMPERIAL, BOYD MARKED WITH THEIR MARK



1040-3"
Individual Nut or Mint

EBONY
3 1/2" X 2" X 2 1/4" HIGH

CATALOG PICTURE
3 1/2" X 2" X 2 1/4" HIGH

LITE EMERALD
3 1/2" X 2" X 2 1/4" HIGH

PEACH-BLO
3 1/2" X 2" X 2 1/4" HIGH

GROUP OF TYPE I

CAMBRIDGE 3" SWAN TYPE II INDIVIDUAL NUT OR MINT

Ref Nr 36

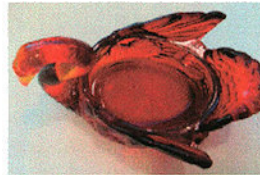
ADD INFO CAMBRIDGE Nr 1040 1/2.

ITEMS: NUT, MINT, ASH TRAY, SALT

Reference BERG SALTY COMMENTS #27 INGERSOLL CAMB SWAN PAGE 4-6 COLOR CAMBRIDGE 2 PAGE 123 CAMBRIDGE BENNET 58-59 COLOR CAMBRIDGE 1 PAGE 15 & 125 COLOR CAMBRIDGE 1 PAGE 55



COLORS: CRYSTOL, EBONY, CARMEN, LT EMERALD, MOCHA, CLEAR SATIN DECORATED, AMBER, FOREST
REMARKS NEW MOLD HAS SWEPT MORE POINTED WINGS, AND HAS A DIMPLE IN THE WING. CAMBRIDGE MADE 1939-1940. CAMBRIDGE C IN TRIANGLE



DIMPLE IN WING.

CATALOG
3 3/8" X 2 1/4", 2 1/8" HIGH

CARMEN
3 3/8" X 2 1/4", 2 1/8" HIGH

EBONY
3 3/8" X 2 1/4", 2 1/8" HIGH

CAMBRIDGE 3" SWAN TYPE IIIA, INDIVIDUAL NUT OR MINT

Ref Nr 37

ADD INFO CAMBRIDGE Nr 1040 1/2 MOLD REWORKED. CALLED Nr 1040 AGAIN. ALSO ALLED W 94

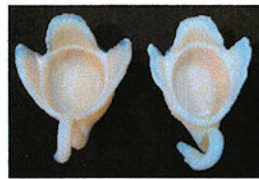
ITEMS: NUT, MINT, ASH TRAY SAI T

Reference BERG SALTY COMMENTS #27 INGERSOLL CAMB SWAN PAGE 8-13 CAMBRIDGE 1949-1953 36, 38, 225 CAMBRIDGE 1949-1953 229,233,286 COLOR CAMBRIDGE 1 PAGE 45 COLOR CAMBRIDGE 2 PAGE 123 CAMBRIDGE BENNET 32, 58. 59



COLORS: CLEAR, CROWN TUSCAN, MILK GLASS,233 &286

REMARKS DIMPLE IN WING, WING DETAIL, AND C IN TRIANGLE MARK REMOVED. NO DETAIL ON HEAD AND NECK. BREAST IS WIDER THAN TYPE IIIB. CAMBRIDGE MADE 1939-1958 ?



CLEAR
3 3/8" X 2 1/2", 2 1/4" HIGH

TYPE IIIB LEFT IIIA RIGHT

CROWN TUSCAN
3 3/8" X 2 1/2", 2 1/4" HIGH

No Detail Head and Neck

CAMBRIDGE 3" SWAN TYPE IIIB, INDIVIDUAL NUT OR MINT

Ref Nr 38

ADD INFO CAMBRIDGE Nr 1040 1/2 REWORKED MOLD. MOLD WENT TO IMPERIAL, NOW AT MOSSER.

ITEMS: NUT, MINT, ASH TRAY. SALT

Reference BERG SALTY COMMENTS # 27 INGERSOLL CAMB SWAN PAGE 8-13 COLOR CAMBRIDGE 2 PAGE 91 COLOR CAMBRIDGE 1 PAGE 125



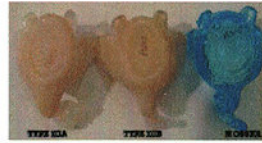
PICTURE CROWN TUSCAN
3 3/8" x 2 7/8", 2 1/4" HIGH

COLORS: CROWN TUSCAN, EMERALD LATE DARK,

REMARKS SAME AS TYPE IIIA WITH SMALLER BREAST & ADDED NECK DETAIL, FLARING TOOL USED INSIDE AND ON WINGS. CAMBRIDGE MADE 1940-1958. MOSSER USED REGULAR PLUNGER..



TYPE IIIB ON LEFT
TYPE IIIA ON RIGHT



Compare IIIA IIIB Mosser
IIIA has wider breast



Right one has small neck
May be another variation



MOSSER
3 1/2" x 2 1/4", 2 1/4" HIGH

CAMBRIDGE PEDESTAL

Ref Nr 40

ADD INFO

ITEMS: INDIVIDUAL

Reference CAMBRIDGE BENNET PAGE 68 HEACOCK & JOHNSON 400



PICTURE CAMBRIDGE GLASS
HAROLD & JUDY BENNETT

COLORS:

REMARKS Duncan or Cambridge in sun-tinted color 2" tall



PICTURE H&J

CAMBRIDGE

Ref Nr 41

ADD INFO

ITEMS: INDIVIDUAL

Reference CAMBRIDGE BENNET PAGE 68



COLORS: CLEAR

REMARKS

PICTURE CAMBRIDGE GLASS
HAROLD & JUDY BENNETT

???? CAMBRIDGE

Ref Nr 42

ADD INFO Appears to be D & M No 54 not generally known in color Probably Cambridge circa 1930's 1" tall

ITEMS: INDIVIDUAL

Reference HEACOCK & JOHNSON 352 SMITH 444-3-2



COLORS:

REMARKS

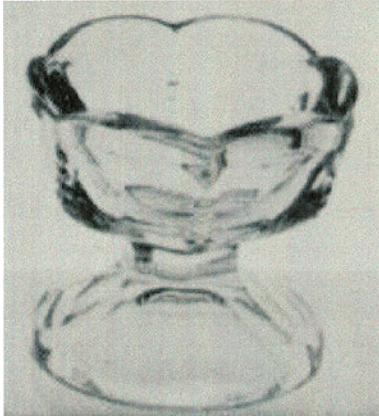
H&J PICTURE

???? CAMBRIDGE

Ref Nr 44

ADD INFO Pedestal base pressed Cambridge No. 2630 COLONIAL (Welker 2 96) circa 1910

ITEMS: INDIVIDUAL *Reference* HEACOCK & JOHNSON 2962 SMITH 17-3-3



COLORS:
REMARKS

H&J PICTURE
1 3/4" high 1 7/8" diam

???? CAMBRIDGE

Ref Nr 45

ADD INFO Pedestal base This appears to be No. 355 salt by Cambridge

ITEMS: INDIVIDUAL *Reference* HEACOCK & JOHNSON 2977



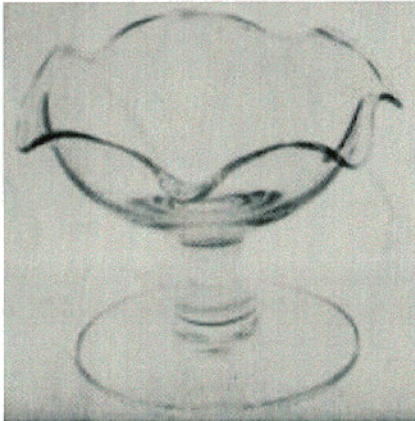
COLORS:
REMARKS

H&J PICTURE
1 1/2" diam

???? CAMBRIDGE

ADD INFO Pedestal base crimped mold-blown salt and "almond". possibly by Cambridge circa 1920

ITEMS: INDIVIDUAL *Reference* HEACOCK & JOHNSON 2993



COLORS:
REMARKS

H&J PICTURE
1 3/4" high 2" diam

???? CAMBRIDGE

ADD INFO Cut round shape uneven top Combination of pressed & cut Cambridge Glass Co.

ITEMS: INDIVIDUAL *Reference* HEACOCK & JOHNSON 3182



COLORS:
REMARKS

H&J PICTURE
1 3/4" diam.

???? CAMBRIDGE

Ref Nr 48

ADD INFO Ind. pedestal base salt with leaf spray engraving circa 1920's possi,bly Cambridge

ITEMS: INDIVIDUAL *Reference* HEACOCK & JOHNSON 3402



COLORS:

REMARKS

H&J PICTURE
1 3/4" high 1 1/2" diam

CAMBRIDGE 3400/71 3" 4 FTD INDIVIDUAL NUT CUP

Ref Nr 52

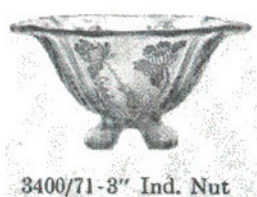
ADD INFO CAMBRIDGE 3400/71

ITEMS: NUT *Reference* CAMBRIDGE 1930-1934 PAGE 31-4 CAMBRIDGE 1949-1953 PAGE 78 & 220 CAMBRIDGE 1949-1953 PAGE 229 COLOR CAMBRIDGE 1 PAGE 51 & 123 COLOR CAMBRIDGE 1 PAGE 55 & 73



COLORS: EMERALD, MANDARIN GOLD, CLEAR, CARMEN, AMBER, GOLD KRYSTOL, HEATHER BLOOM, PEACH

REMARKS ALSO FOUND ETCHED IN GLORIA, ROSE POINT



3400/71-3" Ind. Nut



PICTURE
2 7/8" X 2 3/8", 1 9/16" HIGH

CATALOG PICTURE (ETC

PICTURE
2 7/8" X 2 3/8", 1 9/16" HIGH

PICTURE
2 7/8" X 2 3/8", 1 9/16" HIGH

PICTURE
2 7/8" X 2 3/8", 1 9/16" HIGH

CAMBRIDGE DECAGON PATTERN, SMALL 10 SIDED PEDESTAL ALMOND

Ref Nr 53

ADD INFO CAMBRIDGE Nr 611, CIRCA 1925-40

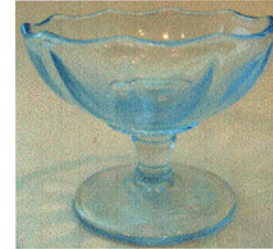
ITEMS: ALMOND Reference CAMBRIDGE 1930-1934 PAGE 27 COLOR CAMBRIDGE 2 PAGE 52-53



COLORS: AMBER, CLEAR, EMERALD LITE, WILLOW BLUE, GOLD KRYSTOL,
REMARKS MAY BE FOUND ETCHED



611-2 1/2" Ind. Almond



PICTURE
2 9/16" DIA, 2 1/8" HIGH

PICTURE
2 9/16" DIA, 2 1/8" HIGH

PICTURE
2 9/16" DIA, 2 1/8" HIGH

PICTURE
2 9/16" DIA, 2 1/8" HIGH

PICTURE
2 9/16" DIA, 2 1/8" HIGH

CAMBERIDGE ??? PEDESTAL ROUND BOWL W/6 PANELS W/RIB AND SEMI TEARDROP

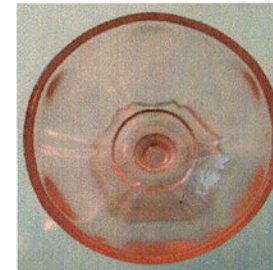
Ref Nr 54

ADD INFO PEDESTAL ROUND BOWL W/6 PANELS W/RIB AND SEMI TEARDROP INSIDE BOWL SIMILAR SHAPE AS

ITEMS: ALMOND Reference



COLORS: PEACH-BLO, AMBER, EMERALD LITE
REMARKS PATTERN INSIDE, PROBABLY MADE WITH DECAGON MOLD WITH NEW TOP RING AND PLUNGER. 6 PANELS INSIDE



PICTURE
2 1/2" DIA, 2 1/8" HIGH

PICTURE
2 1/2" DIA, 2 1/8" HIGH

PICTURE
2 1/2" DIA, 2 1/8" HIGH

PICTURE FROM TOP

CAMBRIDGE CAPRICE ALMOND

Ref Nr 55

ADD INFO MOLD WENT TO IMPERIAL, THEN SUMMIT AND NOW AT CAMBRIDGE COLLECTORS.

ITEMS: INDIVIDUAL ALMOND *Reference* BERG SALTY COMMENTS # 15 COLOR CAMBRIDGE 1 PAGE 81



COLORS: MOONLIGHT

REMARKS MOST CAMBRIDGE HAND FORMED AFTER PRESSING, SUMMIT AS CAME FROM MOLD. SOME SUMMIT HAVE SMALL DOT IN BOTTOM CENTER



PICTURE SUMMIT
3 1/8" X 2 3/8", 1 3/8" HIGH

PICTURE SUMMIT
3 1/8" X 2 3/8", 1 3/8" HIGH

CATALOG PICTURE CAMBRI BERG DRAWING SUMMIT
3 1/8" X 2 3/8", 1 3/8" HIGH

CAMBRIDGE CAPRICE DOUBLE ALMOND/MINT

Ref Nr 56

ADD INFO MOLD WENT TO IMPERIAL, THEN SUMMIT AND NOW AT CAMBRIDGE COLLECTORS.

ITEMS: DOUBLE ALMOND/MINT *Reference* BERG SALTY COMMENTS # 15 HEACOCK & JOHNSON 3346



COLORS: MOONLIGHT

REMARKS MOST CAMBRIDGE HAND FORMED AFTER PRESSING, SUMMIT AS CAME FROM MOLD. SOME SUMMIT HAVE SMALL DOT IN BOTTOM CENTER



PICTURE SUMMIT
3 1/8" X 2 3/8", 1 3/8" HIGH

BERG DRAWING SUMMIT CATALOG PICTURE CAMBRI
3 1/8" X 2 3/8", 1 3/8" HIGH

CAMBRIDGE C213 ASH TRAY WITH PLACE CARD HOLDER

Ref Nr 57

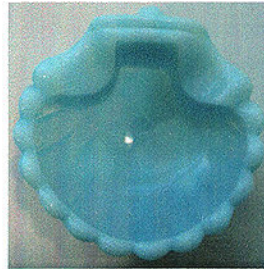
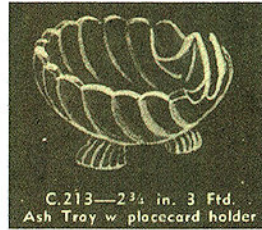
ADD INFO

ITEMS: ASH TRAY

Reference CAMBRIDGE 1949-1953 PAGE 36 COLOR CAMBRIDGE 1 PAGE 39



COLORS: CLEAR, CROWN TUSCAN, MILK, TURQUOISE, WINDSOR BLUE,
REMARKS LARGER FEET



PICTURE
2 3/4" X 2 3/4", 1 1/2" H

CATALOG PICTURE
2 3/4" X 2 3/4", 1 1/2" H

PICTURE FROM TOP
2 3/4" X 2 3/4", 1 1/2" H

CAMBRIDGE 213 FOOTED SEA SHELL ASH TRAY

Ref Nr 58

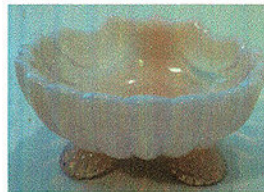
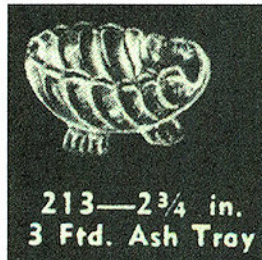
ADD INFO THIS HAS SHELL LIKE STIPPLING ON THE INSIDE OF BOWL

ITEMS: ASH TRAY

Reference CAMBRIDGE 1949-1953 PAGE 5 CAMBRIDGE BENNET PAGE 51



COLORS: CLEAR, CROWN TUSCAN, COBALT, MILK
REMARKS LARGER FEET



PICTURE FROM TOP
2 3/4" X 2 5/8", 1 3/8" HIGH

CATALOG PICTURE

PICTURE CROWN TUSCAN
2 3/4" X 2 5/8", 1 3/8" HIGH

PICTURE CLEAR
2 3/4" X 2 5/8", 1 3/8" HIGH

PICTURE COBALT
2 3/4" X 2 5/8", 1 3/8" HIGH

CAMBRIDGE W 102 FOOTED SHELL ASH TRAY WITH PLACECARD HOLDER

Ref Nr 59

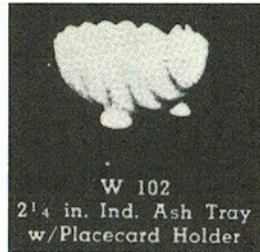
ADD INFO

ITEMS: NUT DISH, ASH TRAY

Reference CAMBRIDGE 1949-1953 PAGE 287 CAMBRIDGE BENNET PAGE 32 CAMBRIDGE BENNET PAGE 63 BERG SALTY COMMENTS # 15

COLORS: MILK,

REMARKS MOLD WENT TO SUMMIT. FOUND DECORATED



CATALOG PICTURE



BERG DRAWING SUMMIT

CAMBRIDGE SEA SHELL # 34 ASH TRAY

Ref Nr 60

ADD INFO

ITEMS: ASH TRAY SOME HAVF AS SAI TS

Reference COLOR CAMBRIDGE 1 PAGE 11 CAMBRIDGE BENNET PAGE 51 COLOR CAMBRIDGE 1 PAGE 11, 85 COLOR CAMBRIDGE 1 87, 89, 123

COLORS: PISTASHIO, CARNIVAL, LAROSA, MARIGOLD CARNIVAL, MOCHA

REMARKS LARGER FEET



PICTURE 3 1/8" X 3 7/8", 1 1/2" HIGH



CATALOG PICTURE



PICTURE 3 1/8" X 3 7/8", 1 1/2" HIGH



PICTURE 3 1/4" X 3 1/4", 1 3/8" HIGH



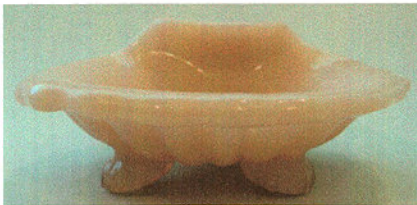
SMALL FEET ON LEFT

CAMBRIDGE SHELL ASH TRAY

Ref Nr 61

ADD INFO

ITEMS: ASH TRAY, SALT? Reference BERG SALTY COMMENTS # 15



COLORS:

REMARKS FEET ARE SMALLER THAN Nr 34



PICTURE
3 1/8" X 2 7/8", 1 1/4" HIGH

SUMMIT SALT
2 3/4" X 2 3/4", 1 1/2" HIGH

BERG DRAWING SUMMIT

PICTURE OF BOTH
SMALLER FEET

NAUTILUS (No. 3450 line) INSERT IN FARBER HOLDER

Ref Nr 62

ADD INFO

ITEMS: INDIVIDUAL Reference



COLORS: AMBER

REMARKS



PICTURE
2 1/4" X 1 7/8", 1 3/4" HIGH

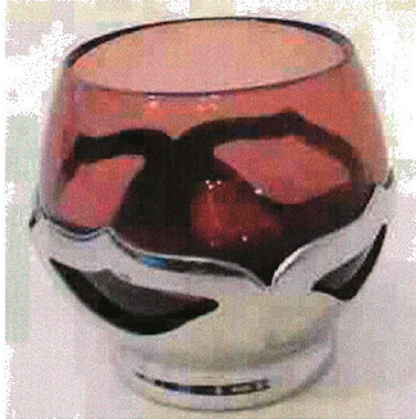
PICTURE FROM TOP
2 1/4" X 1 7/8", 1 3/4" HIGH

CAMBRIDGE GLASS IN FABER BROS HOLDER SIMILAR TO H&J 587

Ref Nr 63

ADD INFO

ITEMS: CUP FOR DRINK *Reference*
SET. SOME USE



COLORS: AMETHYST
REMARKS

PICTURE AMETHYST
2 1/8" DIA, 1 7/8" HIGH

CAMBRIDGE DESSERT MOLD

Ref Nr 64

ADD INFO

ITEMS: DESSERT MOLD *Reference* CAMBRIDGE 1930-1934 PAGE 42

COLORS:
REMARKS



1110 Dessert Mold

CATALOG PICTURE

CAMBRIDGE PIN DISH

Ref Nr 65

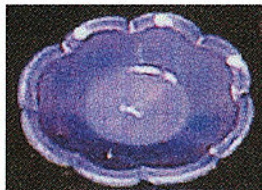
ADD INFO KRYSTOL MOLD FROM OHIO FLINT GLASS DURING NATIONAL GLASS TIME

ITEMS: PIN DISH, SOME HAVE AS SALT *Reference* COLOR CAMBRIDGE 1 PAGE 17 & 21 COLOR CAMBRIDGE 2 PAGE 19



COLORS: CLEAR, WINDSOR BLUE, PRIMROSE, CARRARA,

REMARKS MARKED WITH LARGE C IN TRIANGLE INSIDE BOTTOM. THIS PATTERN MADE BY INDIANA GLASS IN LATER YEARS.



PICTURE
3 3/4" X 2 7/8", 13/16" HIGH

PICTURE MARKED KRYSTOL
3 3/4" X 2 7/8", 13/16" HIGH

CATALOG PICTURE
3 3/4" X 2 7/8", 13/16" HIGH

PICTURE MARK
3 3/4" X 2 7/8", 13/16" HIGH

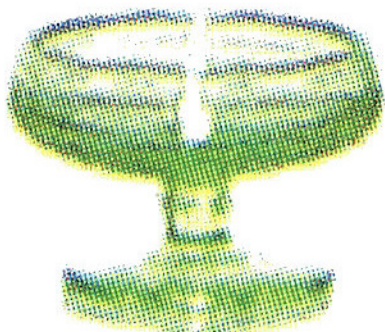
UNMARKED INDIANA G
3 3/4" X 2 7/8", 13/16" HIGH

CAMBRIDGE WETHERFORD ROOTED ALMOND

Ref Nr 66

ADD INFO

ITEMS: ALMOND *Reference* COLOR CAMBRIDGE 2 PAGE 33



COLORS:

REMARKS

CATALOG PICTURE